



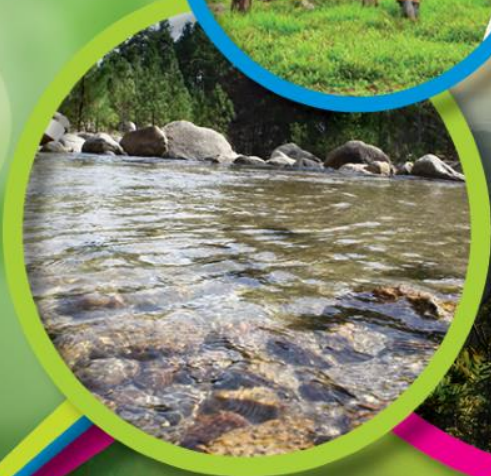
Gobierno de Reconciliación
y Unidad Nacional
El Pueblo, Presidente!



MARENA
Ministerio del Ambiente
y los Recursos Naturales

Readiness Package










NICARAGUA



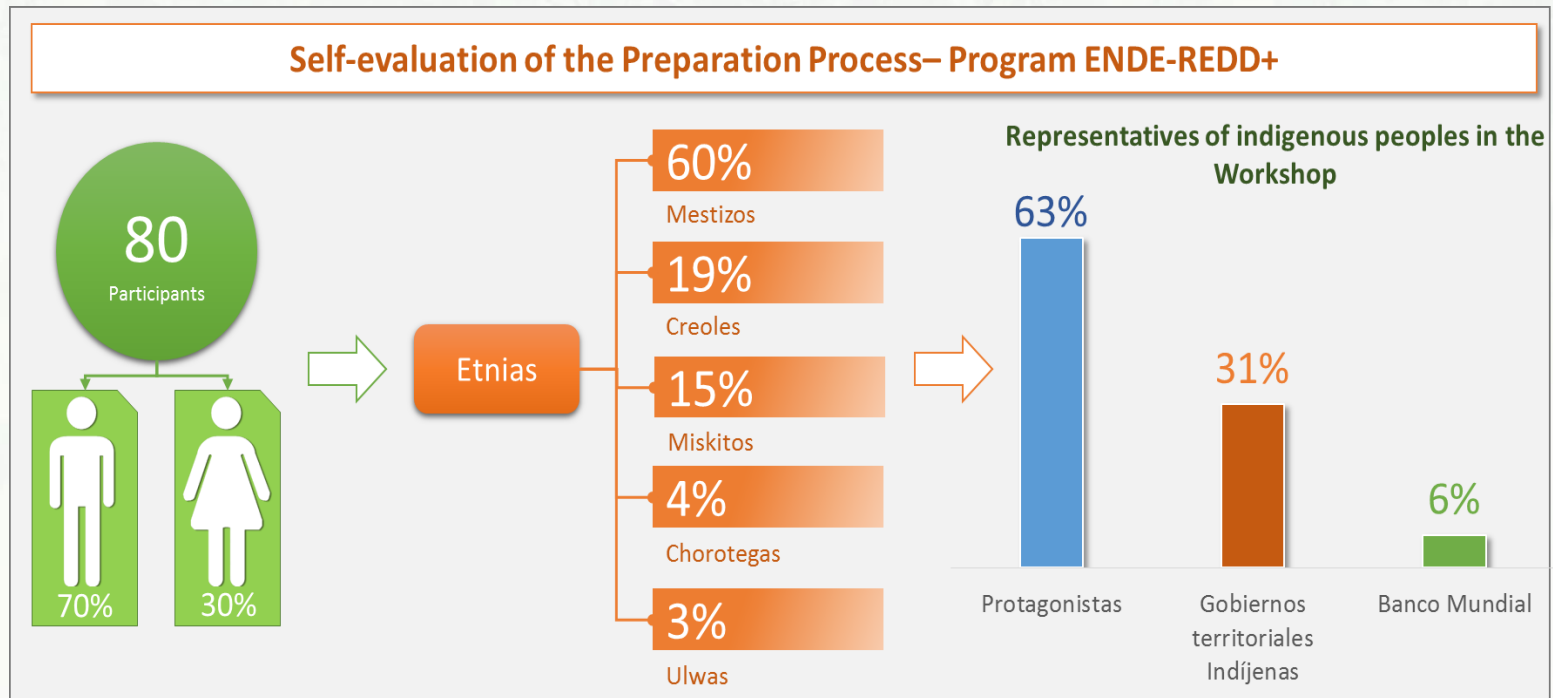
**FOREST
CARBON
PARTNERSHIP
FACILITY**

Progress in R-PP implementation at a glance

workshop self-assessment: Average individual valuation

Component	Sub-component	Status
1. Readiness organization and consultation	1a. National REDD+ Management Arrangements	
	1b. Consultation, Participation and Outreach	
2. REDD + Strategy Preparation	2a. Assessment of Land Use, Land-Use Change Drivers, Forest Law, Policy and Governance	
	2b. REDD+ Strategy Options	
	2c. Implementation Framework	
	2d. Social and Environmental Impacts	
3. Forest Reference Emissions Levels		
4. Measuring, Reporting, and verification	4a. National Forest Monitoring System	
	4b. Information system for non-carbon benefits, other impacts, governance and safeguards	

Self-evaluation of the preparation process- Preparation Package



Participants reviewed each indicator, its goal, process progress to date, and evidence of progress. Subsequently they marked the values individually and then proceeded to do the evaluation of the group.

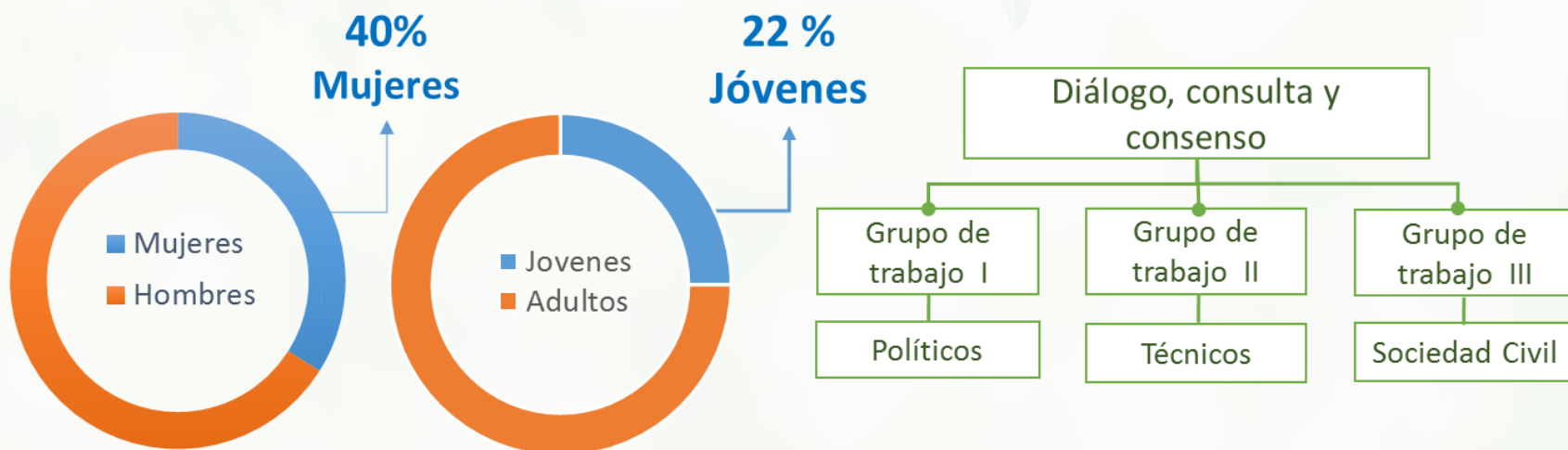


1a. National REDD+ Management Arrangements

- ✓ **Accountability and transparency is ensured**
 - Compliance with the national legal framework and Grant Agreement (TF 99264) regarding the use, management and administration of external funds.
- ✓ **Funds management capacity is established**
 - Satisfactory results in the management of funds (disbursements 84%)
 - Five financial and compliance audits (Office of the Comptroller General and Price Water House Cooper)
- ✓ **Technical supervisión capacity has improved over time**
 - 10 technical missions and joint supervision by the Ministry of Finance and World Bank
- ✓ **Multi-sectoral coordination continue to be strengthened**
 - Ministries of Agriculture (MAG), Community family, cooperative, and associative family economy (MEFCCA), PRO-NICARAGUA, National Livestock Commission (CONAGAN), and the Forestry Commission (CONFOR)
 - In the Pacific and Central-Northern regions of the country there has been coordination with municipal governments, PI-PCN, universities, trade and farmer associations regarding production, consumption and commercial aspects.
- ✓ **Feedback and grievance redress**
 - First version of the mechanism is established and operating.

1b. Consultation, Participation and Outreach

- ✓ **Institutional mechanisms promote adequate stakeholder participation**
 - Dialogue platform functioning well and inclusive: academia, NGOs, Indigenous territories, farmers associations, indigenous peoples, among others.
 - Regional Northern and Southern Caribbean Coast Autonomous Governments and the Indigenous Territories Governments.

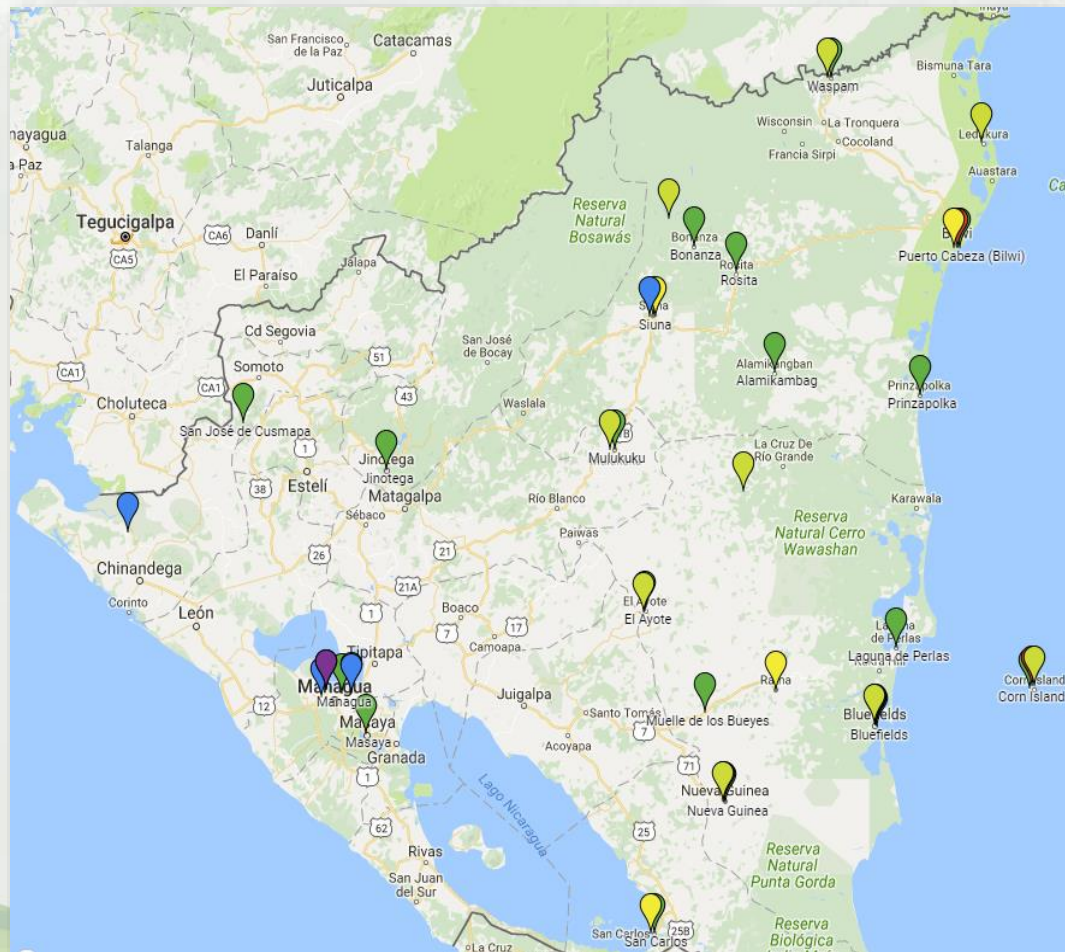


- ✓ **Collective construction of the first version of the ENDE-REDD+ Strategy**
 - Following Group I's guidance, MARENA coordinated with Group II through thematic roundtables, and consulted Group III.
 - Indigenous and Afro-descendants fully represented in the three groups.

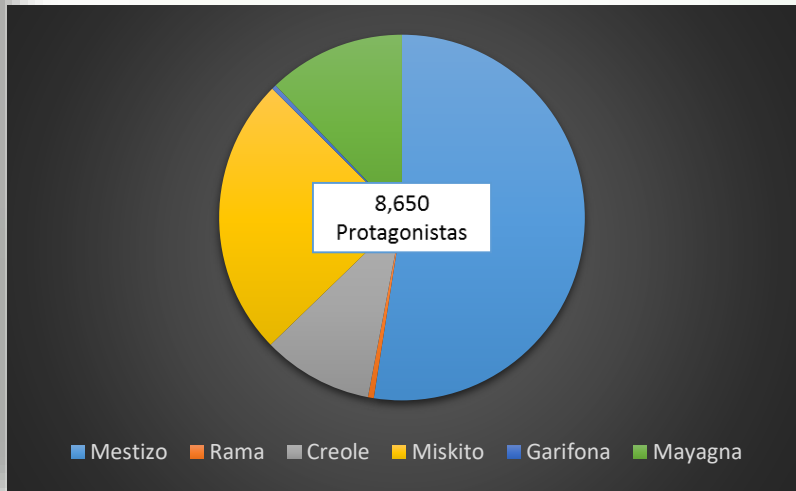
1b. Consultation, Participation and Outreach

Broad-based participation in the ENDE – REDD+ readiness process

<https://www.google.com/maps/d/viewer?mid=1DhPgCfkjD4e7PvAtqF1CSZZeD7k>



Systematization of Broad-based Community Participation		
Activities	# of events	Partici-pants
Workshops	91	4,170
Forums and Congresses	18	2,776
Work Sessions	96	1,704
Total	205	8,650



1b. Consultation, Participation and Outreach

Successful consultation of the first version of the ENDE-REDD+ Strategy

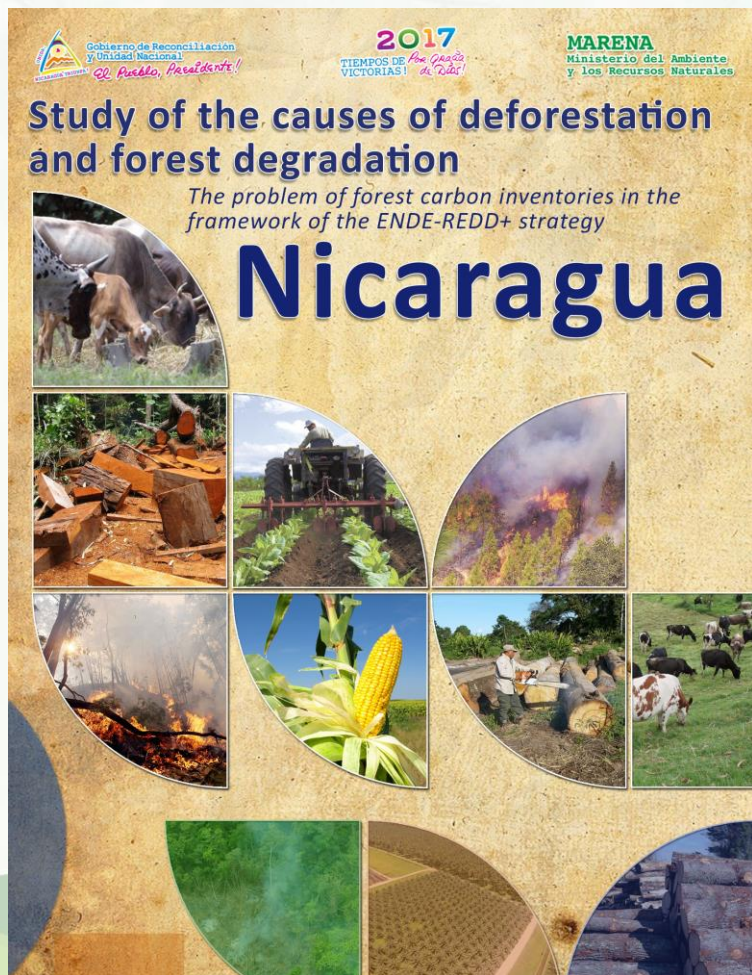


Free, Prior and Informed Consent

Ten consultation activities were carried out within the framework of the ENDE-REDD: 4 to the CRACCS, 1 Consultation for the ESMF and SESA report and 5 of the strategy paper

2a. Assessment of Land Use, Land-Use Change Drivers, Forest Law, Policy and Governance

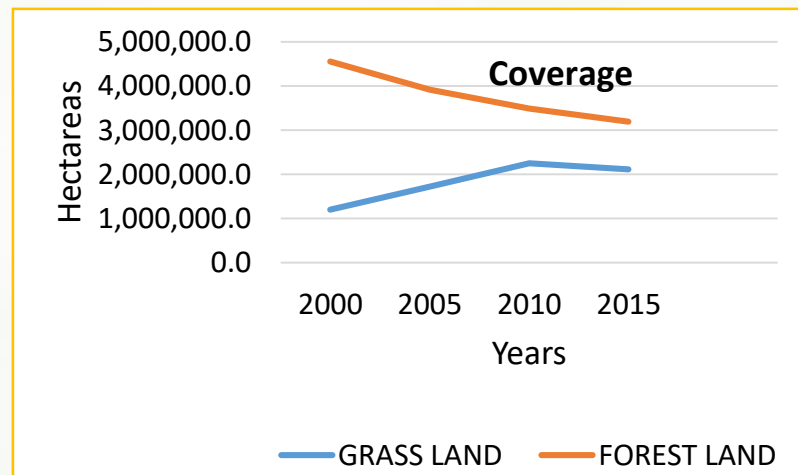
- ✓ Extensive consultation of stakeholder's perception about drivers of deforestation
- ✓ Analytical studies were carried out



Synergies with the ERPD process

- Detailed analysis of the drivers for the Caribbean Coast Regions
- Lessons learned applied to the PCN region

Deforestation 2005 - 2015	
Location	Has/Year
Protected area	23,074
Indigenous territory outside protected areas	24,300
Private property outside protected areas	25,126



2a. Assessment of Land Use, Land-Use Change Drivers, Forest Law, Policy and Governance

- ✓ Analysis of the existing legal and policy framework



- ✓ Regulation gaps were identified
 - Fondo de Carbono (regulation)
 - Benefit-sharing (ongoing analysis)

Synergies with the ERPD process

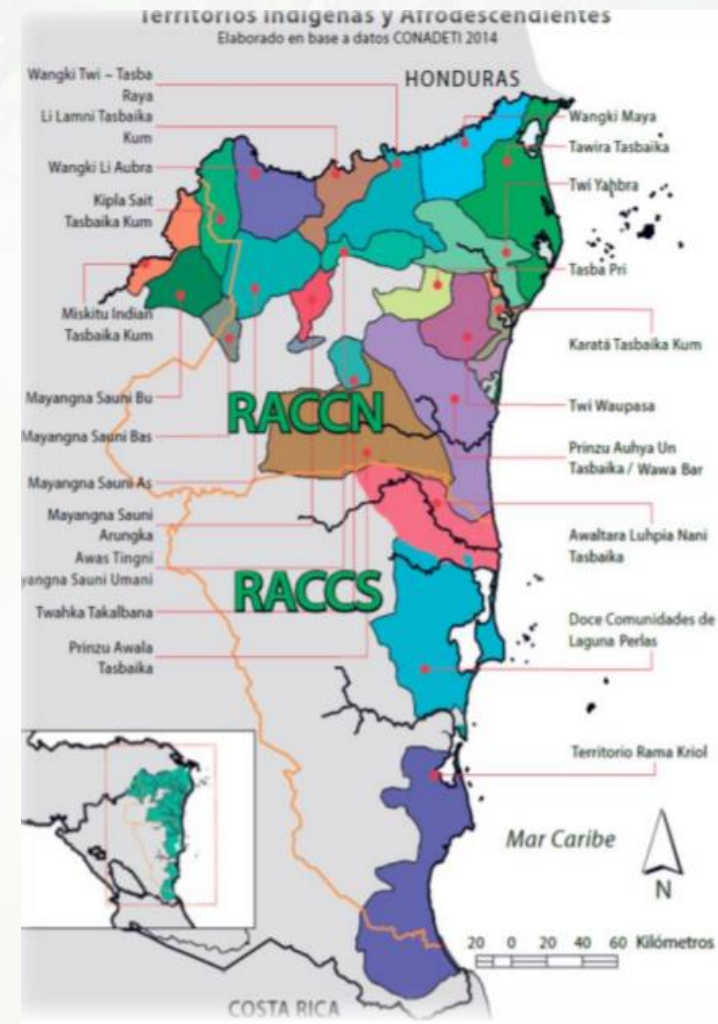
- ✓ Lessons learned on natural resources governance in indigenous territories



- ✓ Land and forest resource tenure assessment in the Caribbean Coast Regions

2a. Assessment of Land Use, Land-Use Change Drivers, Forest Law, Policy and Governance

- ✓ 23 Indigenous and Afro-descendent Territories delimited and titled.
 - 304 communities
- ✓ Law No. 462 on Forest Conservation and Sustainable Development
 - Fondo de Carbono: seeks to provide incentives to land owners for forest management and conservation.



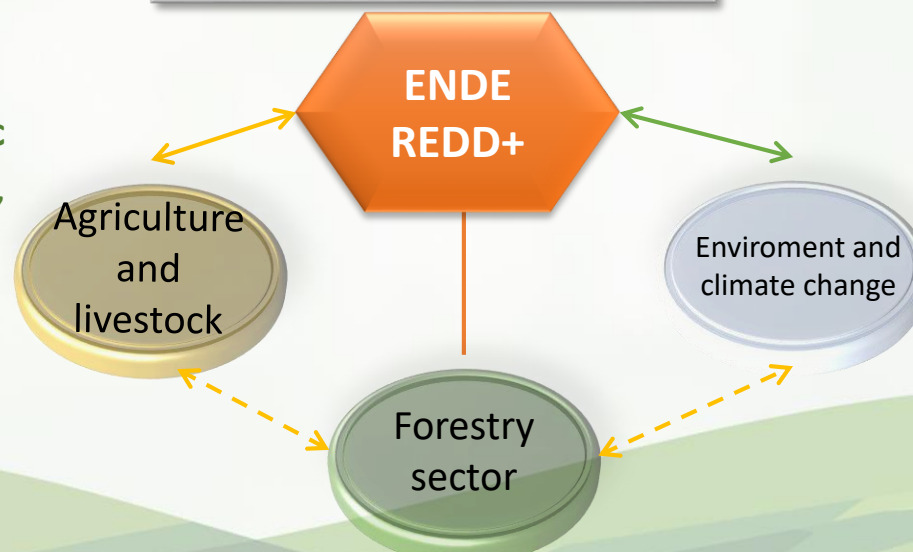
**Next
steps**

Strengthen the land use, land-use change analysis in the Pacific-Centre-Northern region of the country

2b. REDD+ Strategy Options

Six cross-sectoral strategy options

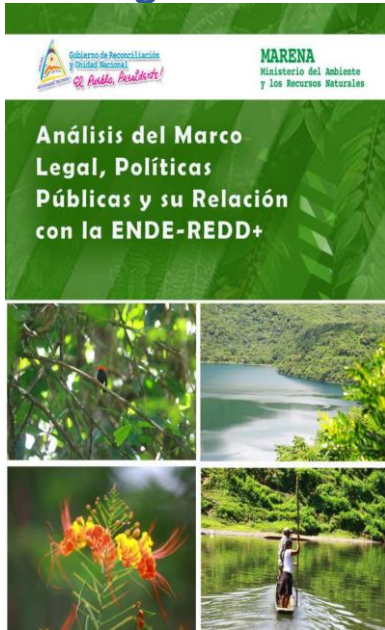
- 1 Strengthen the promotion of **values** such as love and care for our Mother Earth.
- 2 Promote **forestation, reforestation and natural regeneration**.
- 3 Strengthen **institutional capacities** and structures involved in forest management.
- 4 Promote **positive incentives** leading to the **restoration** of rights to the indigenous and rural populations that have protected the forest.
- 5 Strengthen the development of **economic alternatives** in order to adapt to climate change, based on ecosystems.
- 6 Strengthen **environmental and climate change initiatives**, specifically with indigenous and Afro-descendant peoples living on the Caribbean Coast.



2c. Implementation framework

Implementation Framework

Legislation



Finalized

Process directives

Define criteria to finance emissions reductions programs and initiatives

Institutional framework will be defined for each ER Program

In process

Benefit sharing

Benefit sharing has been discussed in general, but in-depth discussion will happen under the ERPD development process

In process

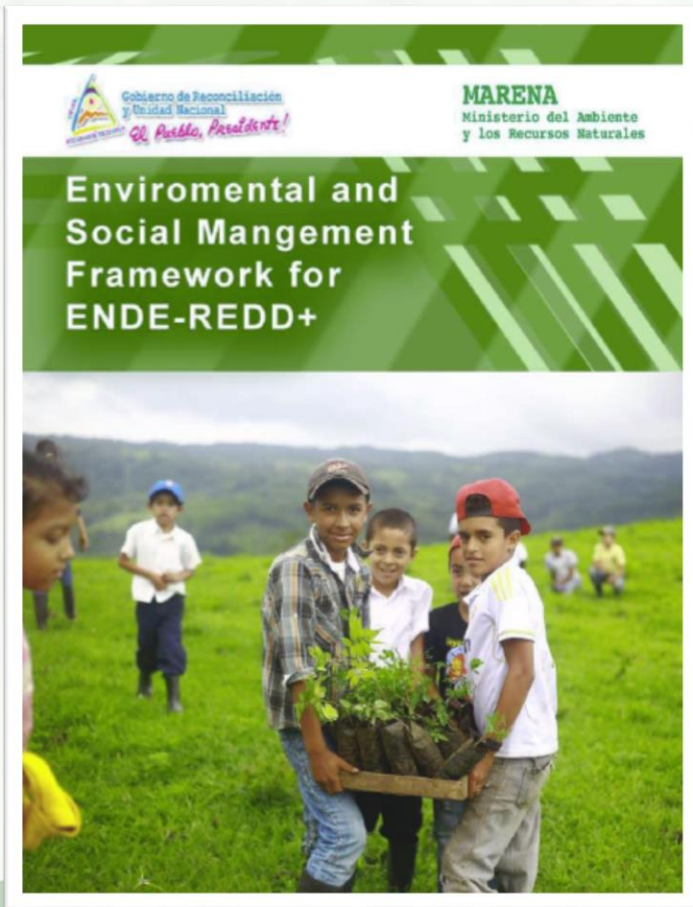
Registry

A system to register Emission Reductions activities will be developed

In process

2d. Social and Environmental Impacts

Available documents
(see R-Package annexes)

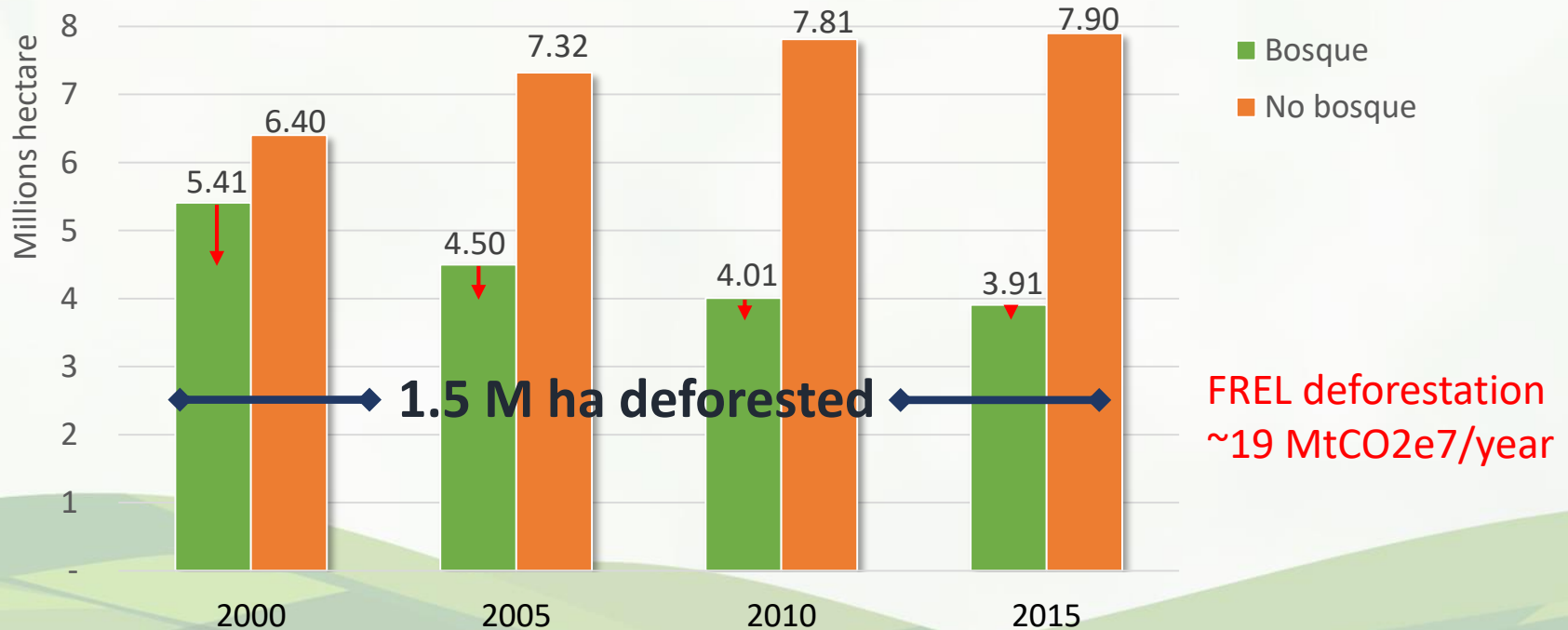
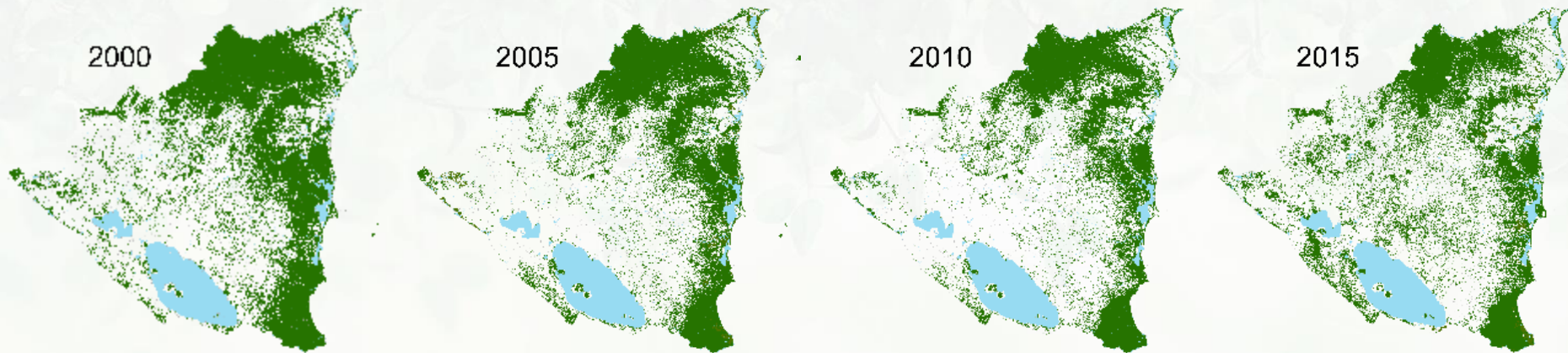


- ✓ Analysis of World Bank Safeguard Policy OP4.12 on Involuntary Resettlement.
- ✓ Indigenous Peoples Planning Framework
- ✓ Strategic Environmental and Social Assessment (SESA) draft Report
- ✓ Draft National Safeguards Information System

3. Forest Reference Emissions Levels

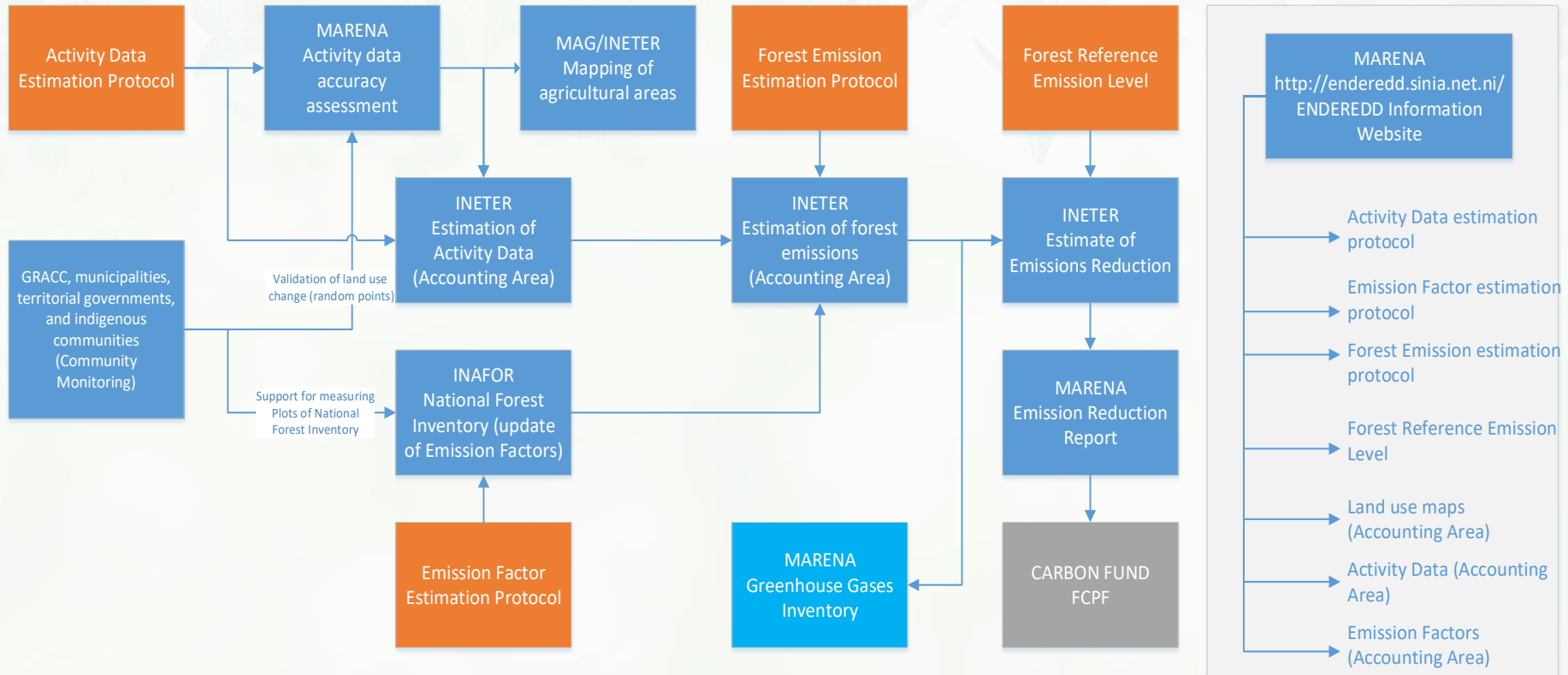
Activity data: IPCC Approach 3

1.5 million hectare deforested between 2000 and 2015



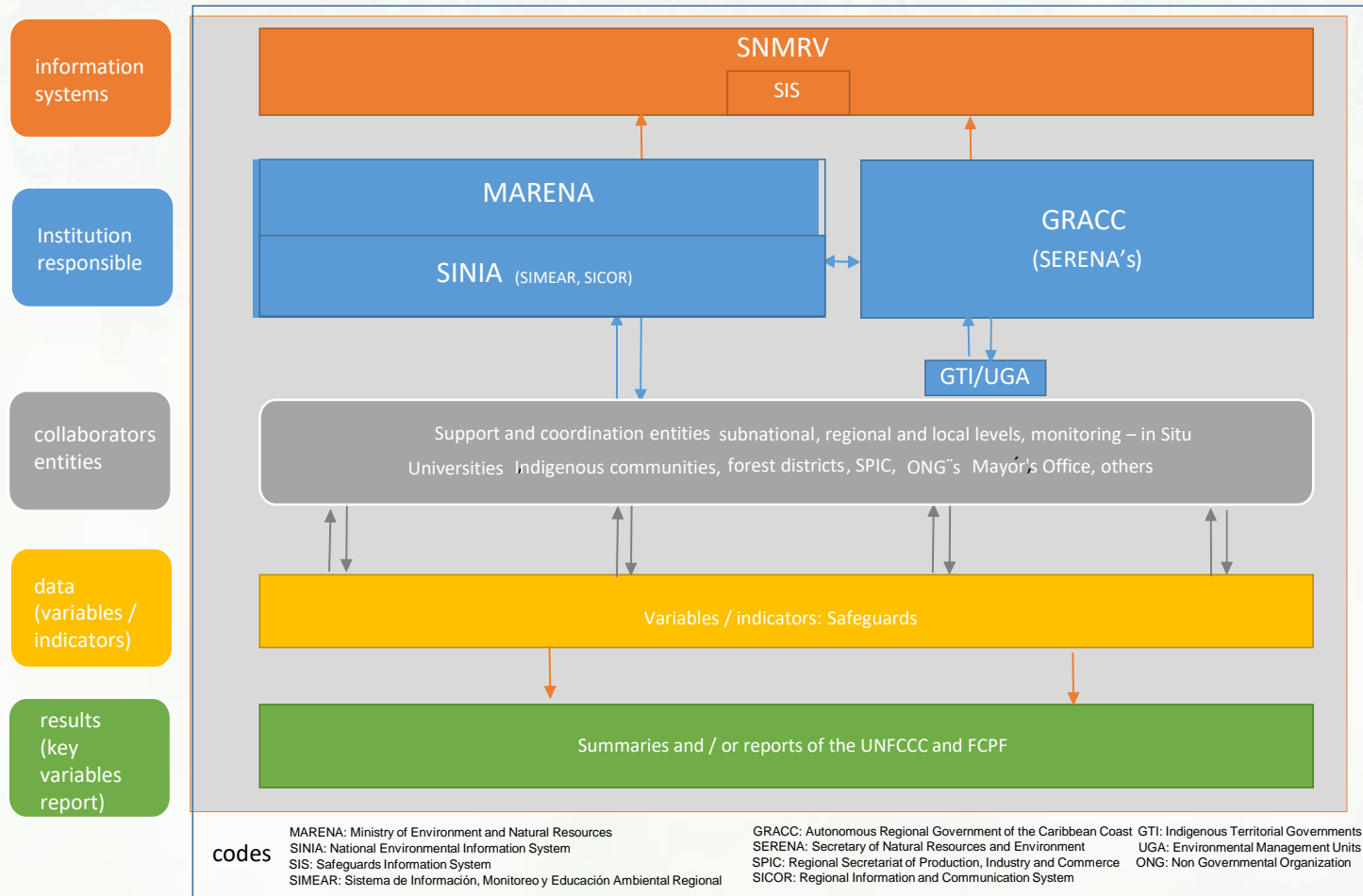
4a. National Forest Monitoring System

Monitoring, Reporting and Verification Flow



4b. Information system for non-carbon benefits, other impacts, governance and safeguards

SAFEGUARD INFORMATION SYSTEM (SIS)



4a. National Forest Monitoring System



Capas de referencia

- Red Vial
- Poblados
- Ríos y lagos
- Áreas protegidas
- 2005

Divisiones administrativas

- Departamentos
- Municipios
- Territorios indígenas
- Corredor seco
- Área del ERPD

Capas temáticas

- Suelo
- Clima
- Pendiente
- Uso potencial
- Elevación

Cobertura histórica

- 1969
- 1983
- 1990
- 2000
- 2005
- 2010
- 2015

Deforestación

- Deforestación 1983 – 2000 – 2005 – 2010 - 2015
- Puntos calientes de deforestación 1983 – 2000.
- Puntos calientes de deforestación 2000 – 2005
- Puntos calientes de deforestación 2005 – 2010
- Puntos calientes de deforestación 2010 – 2015.
- Degradación forestal 1983 – 2000 – 2005 – 2010 - 2015



ENDE Web site

- Redesign of the ENDE web site template.
- Updating and incorporation of new information.

GeoPortal

- Updating and incorporation of layers in the GeoPortal viewer.
- New classification of geographic objects.

Thank you very much!



www.marena.gob.ni

www.enderedd.sinia.net.ni

YouTube Marena Nicaragua

@MarenaNicaragua

MarenaNicaragua